

commune de Castagniers
PLAN D'OCCUPATION DES SOLS

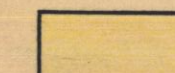
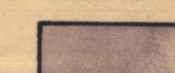
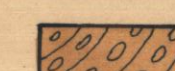

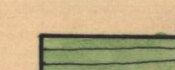


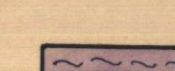

ETUDE GEOLOGIQUE
 ET GEOTECHNIQUE

Dossier G 75 299
 Date 1.1.1976
 N° de la pièce
4

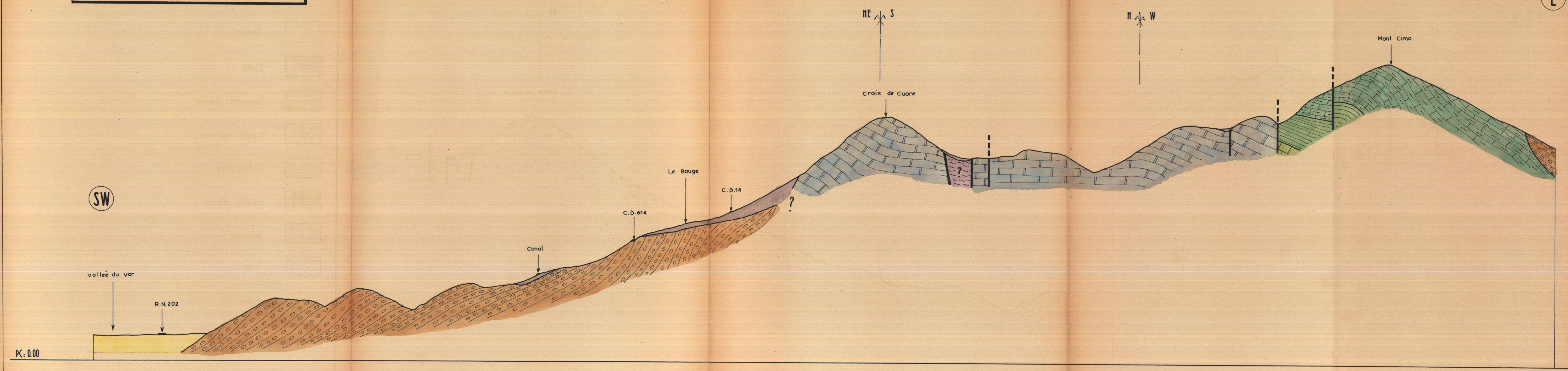
PROFIL GEOLOGIQUE AA

1/5 000

LEGENDE

-  Alluvions
-  Éboulis
-  Conglomérats pliocènes
-  Crétacé supérieur
-  Crétacé moyen
-  Crétacé inférieur
-  Jurassique
-  Trias
-  Faille

PROFIL GEOLOGIQUE AU 1/5000



E